

# The Ark May 1997

## Cast:

Cecilia - Beverley Rousset  
Agnes - Lin Bendall  
Martha - Jane Hoskisson

## Technical and Production Staff:

Director - Anne Everett  
Set Design - Catherine Harari  
Stage Manager - Jane Easton  
Lighting - Tim Hancox  
Properties - Joy Waelchli  
Seamstress - Susan Bergomi  
Set Construction - Jacques Flumet, George Krasker  
Stage Crew - George Krasker John Newsome  
Sound - Ray Bach  
Prompter - Emma Connolly  
Photographer - Chris Jones  
Bar - Barry Gilbert-Miguet  
Catering - Nathalie Stump  
Publicity and Programme - Mark Clayton  
Front of House - Neil-Jon Morphy  
Box Office - Theatre in English

## FEATS Awards

2<sup>nd</sup> Prize for Best Play  
Best Actress - Beverley Rousset



Anne Everett, Jane Hoskisson  
Beverley Rousset, Lin Bendall


The Geneva English Drama Society proudly presents a gala performance of **THE ARK**

A one-act play by Helen Griffin directed by Anne Everett

ONE GENEVA PERFORMANCE 8:30 pm  
Prior to presentation in Brussels at the Tuesday  
Festival of European Anglophone Theatrical Societies 13 May 1997  
Monday, 19 May 1997 Théâtre Pitoëff  
Centre Culturel de Woluwe St. Pierre rue de Carouge  
ave Charles Thielemans 93, Brussels

*I am standing upon the seashore.  
A ship at my side spreads her white sails to the morning breeze and starts for the blue ocean.  
She is an object of beauty and strength.  
I stand and watch her until at length she hangs like a speck of white cloud just where the sea and sky come to mingle with each other.  
Then someone at my side says: "There, she is gone!"  
"Gone where?" Gone from my sight. That is all.  
She is just as large in mast and hull and spar as she was when she left my side and she is just as able to bear her load of living freight to her destined port.  
Her diminished size is in me, not in her.  
And just at the moment when someone at my side says: "There, she is gone!" there are other eyes watching her coming, and other voices ready to take up the glad shout: "Here she comes!"  
And that is dying.*

Anonymous



Poster Design: Helen McGowan

**FEATS '97**  
A Festival of One Act Plays  
at the Centre Culturel de Woluwe -St -Pierre  
Avenue Charles Thielemans 93 - 1150 Bruxelles  
16th-19th May 1997 at 19.30 h



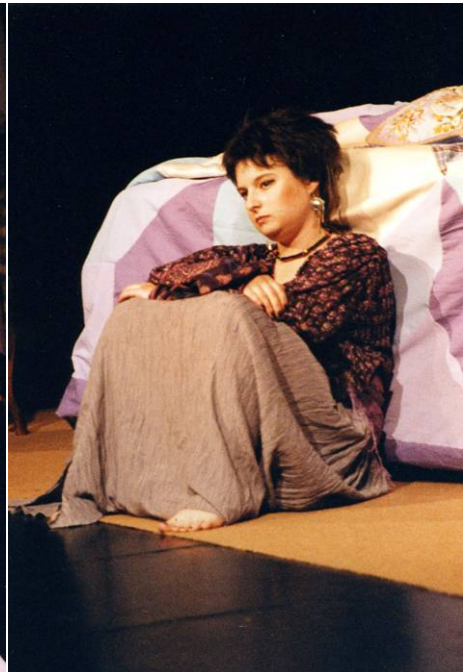
Beverley Rousset, Jane Hoskisson, Lin Bendall



Beverley Rousset



Lin Bendall



Jane Hoskisson