

Rabbit Hole

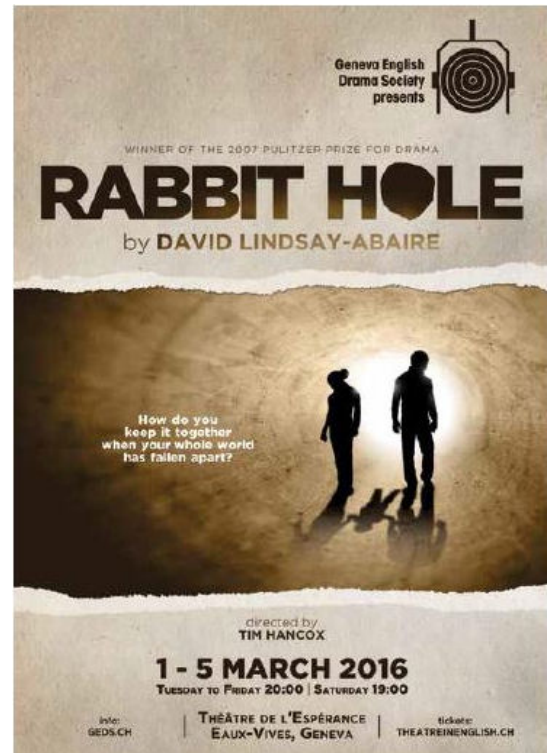
March 2016

Cast:

Becca - Cecile Van de Voorde
Izzy - Noelle Rentsch
Howie - Chaitan Jain
Nat - Gemma Parkes
Jason - Daire O'Doherty
Voice of Danny - Jonah Goddard

Technical and Production Staff:

Director – Tim Hancox
Stage manager - Neil-Jon Morphy
Set design - Neil-Jon Morphy, Tim Hancox
Set construction - Brian Allardyce, Richard Brown, John Douglas, Howard Hornfeld, Bill Lloyd, Neil-Jon Morphy, John Newsome, Nathalie Stump, Brian Thomas, Roger Williams
Set decor - Nathalie Stump
Lighting - Amy Brown, John Newsome, Jane Easton
Sound - Steve Pavis
Props - Janet Fremeaux
Costumes - Liz Comstock-Smith
Prompts - Margaret Byskov, Mary Ahern
Poster design - Cyjae Castillo, via www.DesignCrowd.com
Program design - Sam Al-Hamdani, Viki Lazar



Publicity - Mark Clayton, Janet Fremeaux, Viki Lazar, Daire O'Doherty, Beibhinn Regli
Production, rehearsal, and cast photographs - David Pittuck
Front of house manager - Viki Lazar, Tamaam Madi-Nassar
Ticket sales - Theatre in English





Cecile Van de Voorde, Noelle Rentsch, Gemma Parkes



Chaitan Jain, Cecile Van de Voorde



Chaitan Jain



Noelle Rentsch, Gemma Parkes



Daire O'Doherty



Chaitan Jain, Daire O'Doherty, Cecile Van de Voorde



Noelle Rentsch, Cecile Van de Voorde



Gemma Parkes, Cecile Van de Voorde



Cecile Van de Voorde, Chaitan Jain