

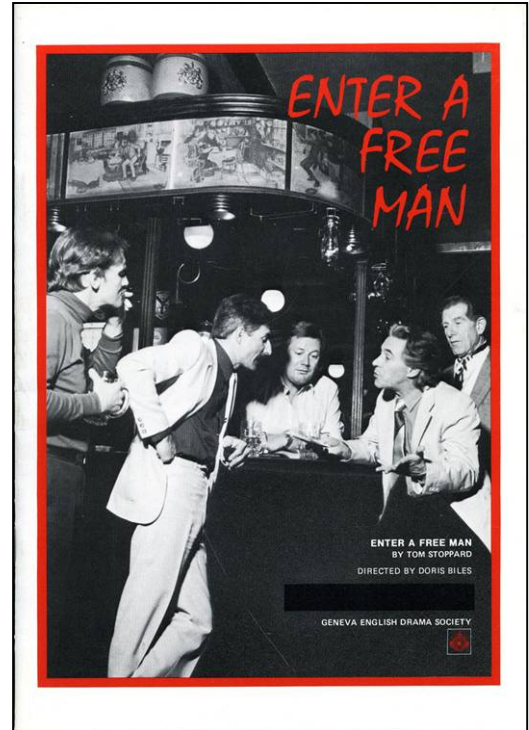
# Enter a Free Man March 1987

## Cast:

Persephone - Sue Humphreys  
Linda - Pat Butler  
George Riley - Dan Boyle  
Harry - Tim Groser  
Able - Mark Wilson  
Carmen - Richard Powell  
Brown - Mac McVeigh  
Florence - Yvette Morris

## Technical and Production Staff:

Director – Doris Biles  
Stage Manager - John Biles  
Assistant Stage Manager - Martin Inwood  
Set Design - John Biles  
Production Secretary - Joy Waelchli  
Set Construction - John Biles, Martin Inwood,  
Chris Saltmarsh, David Humphreys, Sandra  
Shillitoe, Gerald Antonietti  
Costumes - Vivien Klischenmann  
Properties - Shirley Janssens  
Furniture - Valerie Antonietti  
Rehearsal Prompt - Sandra Shillitoe  
Lighting Design - Robert Boyle  
Lighting - Robert Boyle, John Hannon,  
Charles Gilson, David Jennings,  
Georges Herein, Jennifer Janssens,  
Harold Verity-Smith, Mike Hubbard  
Sound - Mac McVeigh, Mike Hubbard



Musical Chimes - David Payne  
Ticket Sales Control - Jean  
Navassardian  
Front of House Manager - Ted Talbot  
Front of House Bar - David Humphreys  
Poster Design - Steve Ewart  
Photography - Barry Gilbert-Miguet  
Publicity - Frances Favre  
Programme - Jim Flux, Annette Kaplun



Mark Wilson, Tim Groser, Richard Powell, Mac McVeigh, Dan Boyle



Tim Groser  
Richard Powell



Sue Humphreys  
Pat Butler

Dan Boyle  
Mark Wilson  
Mac McVeigh



Mark Wilson  
Yvette Morris

